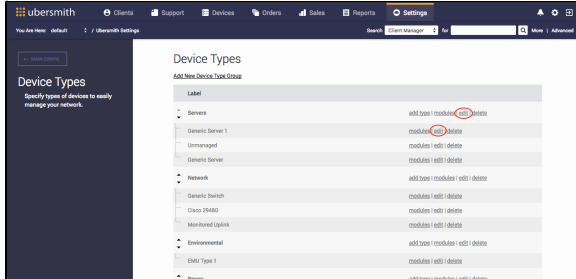


# Managing Device Type Groups and Device Types

Once you have [created a device type group or device type](#), you can perform various actions on it.

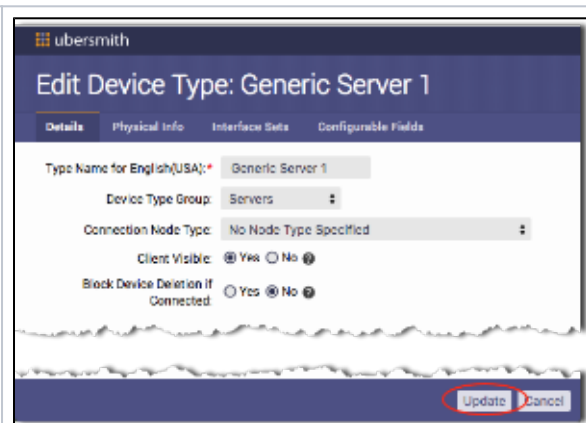
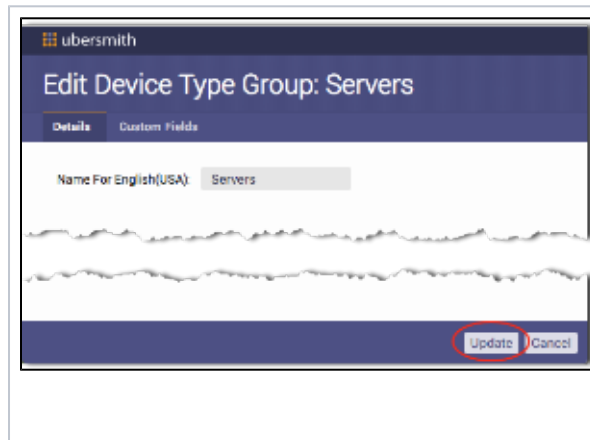
## Editing Device Type Groups and Device Types

1. [Access The Device Types page.](#)
2. Click **edit** in a device group or device type row of the device type group or device type for which you want to edit.



The *Edit Device Type Group* or *Edit Device Type* page appears.

3. From the *Edit Device Type Group* or *Edit Device Type* page, make any necessary updates you need.
4. Click **Update**.



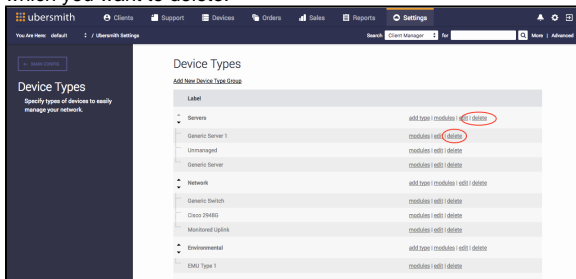
On this page:

On this page:

- [Editing Device Type Groups and Device Types](#)
- [Deleting Device Type Groups and Device Types](#)
- [Reordering Device Type Groups](#)
- [Related Topics](#)

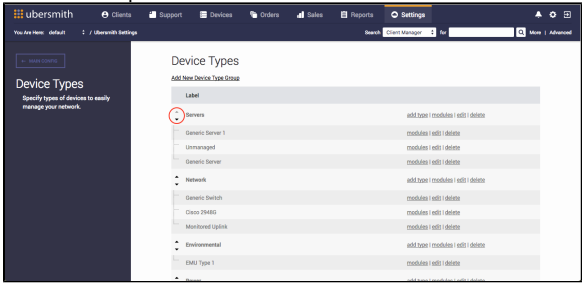
## Deleting Device Type Groups and Device Types

1. [Access the Device Types page.](#)
2. Click delete in a device group or device type row of the device type group or device type for which you want to delete.



## Reordering Device Type Groups

- To change the display order of custom field group, click the up or down arrow until the group is in the desired position.



## Related Topics

[Managing Device Types Groups and Device Types](#)

[Managing Custom Device Fields](#)

[Adding Device Group and Device Type Modules](#)

[Managing Device Group and Device Type Modules](#)

[Adding Device Types](#)

[Ubersmith Device Module Examples](#)