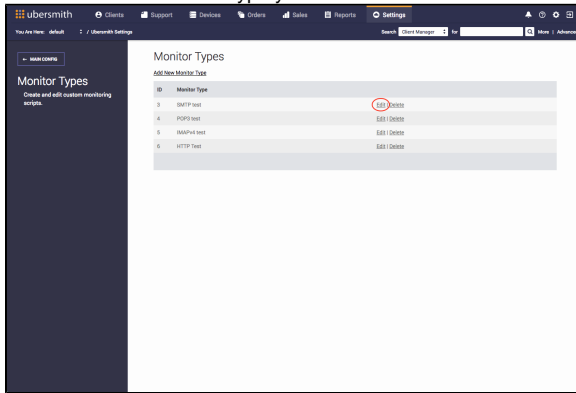


# Managing Monitor Types

Once you have [added a monitor type](#), you can perform various actions.

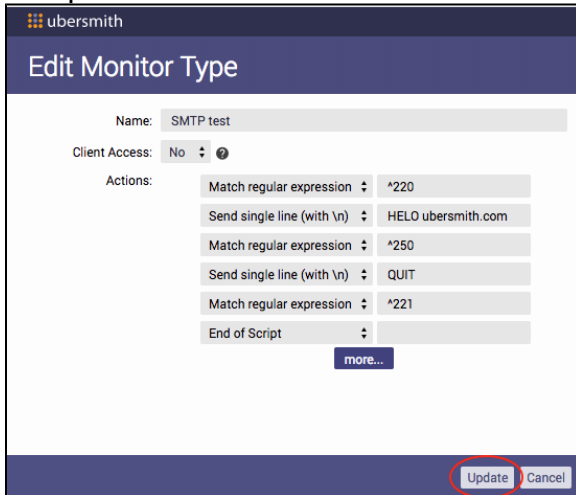
## Editing Monitor Types

1. [Access the Monitor Types page.](#)
2. Click **Edit** for the monitor type you want to edit.



The *Edit Monitor Type* page appears.

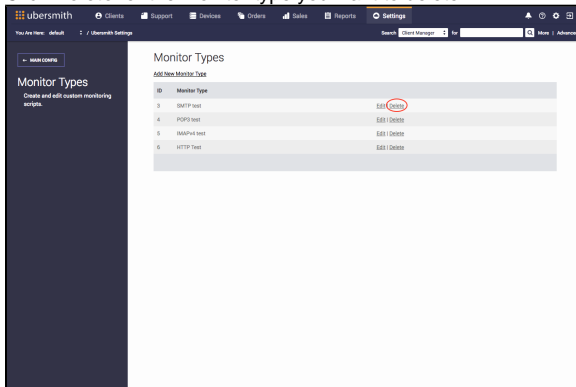
3. Make any necessary updates you need.
4. Click **Update**.



## Deleting Monitor Types

Deleting a monitor type, or monitor script removes that configuration from any monitor it's assigned to, and the monitor will no longer work.

1. [Access the Monitor Types page.](#)
2. Click **Delete** for the monitor type you want to delete.



On this page:

On this page:

- [Editing Monitor Types](#)
- [Deleting Monitor Types](#)
- [Related Topics](#)

## Related Topics

[Adding Monitors](#)

[Managing Monitors](#)

[Adding Monitor Types](#)

[Using the Monitoring Dashboard](#)